

# PemkoHinge®

## Continuous Geared Aluminum Hinges

### CONTENTS:

What is PemkoHinge® .....	84
PemkoHinge® Attributes/Design Features .....	84
Ordering Chart .....	84
BHMA Certification Program .....	85
Hospital Tip .....	85
Cycle Requirements .....	85
Weight Bearing.....	85
UL Fire Labeling.....	85
Electrical Modifications.....	86
Options For Electrically Modified PemkoHinge® .....	86
X-Series PemkoHinge® .....	87
Offset Hinge .....	88
Full Mortise Hinges .....	89
Special Full Mortise Hinges.....	90
Kawneer Full Mortise Hinges.....	91
Raised Gear Hinges.....	91
Full Mortise Safety Hinges.....	92
Wide Throw Full Mortise Hinges.....	93
Wide Throw Half Surface Hinges .....	93
Half Surface Hinges.....	94
Half Mortise Hinges .....	94
Full Surface Hinges.....	95
Full Surface Center Pivot Hinge.....	95
Full Surface Balanced Pivot Hinge .....	95
Full Mortise Residential Hinges .....	96
Firepins™ .....	97
Double Swing Hinge.....	98
Emergency Release Stops .....	98
Power Transfer Units.....	99
Pemko PT Information Form .....	100
ERS x DSH Customer Form.....	101
ERS Customer Form.....	102
DSH Customer Form .....	103

### INDEX:

PRODUCT	PAGE	PRODUCT	PAGE	PRODUCT	PAGE
DSH.....	98	FM_SLI.....	89	RS138.....	96
EL-CEPT .....	99	FM_SLISF .....	92	RS175.....	96
EL-EPT .....	99	FS.....	95	SPFM.....	90
EL-EPT-SC.....	99	FS_BP.....	95	SPFM_SLF.....	90
EL-EPTL.....	99	FS_CP.....	95	SPFM_SLI.....	90
ERS .....	98	HM .....	94	WT_FM .....	93
FM.....	89	HS .....	94	WT_HS.....	93
FM_RG .....	91	HS_SF.....	94	XF.....	87
FM_SF.....	92	K_FM.....	91	XI .....	87
FM_SLF.....	89	OS_FM .....	88	XK .....	87
FM_SLF138.....	92	OS_HS.....	88	XM.....	87
				X25M.....	87

NOTE: Products shown in this section may not be drawn to scale

## What is PemkoHinge®?

PemkoHinge® consists of two full-height, paired and geared leaves. Each geared leaf rotates evenly from top to bottom riding on proprietary polymer blended bearings. The geared leaves and bearings are held together by a full-length channel cap. This assembly retains the smooth, clean lines of the door and frame, while easily supporting heavy vertical loads.

## PemkoHinge®

### SECURITY, SAFETY, PRIVACY, LOW WEAR AND TEAR

#### PemkoHinge® Attributes:

- With a continuous hinge, typical alignment problems (such as door sag and binding) are eliminated
- The continuous hinge distributes load stress uniformly along the full length of the door and frame
- The gear design of the continuous hinge ensures symmetrical operation of each leaf
- ½ lb. or less operating force required to operate most doors, regardless of size
- Low operating force feature makes continuous hinges ideal for doors used by the physically challenged
- The continuous hinge, when installed on standard steel doors and frames, requires no additional reinforcement. However, hinge preps must have fillers installed for proper operation
- A high degree of security can be achieved for exterior openings or restricted spaces by using a continuous hinge. With the geared construction and the full-length channel cap, the common gap between the door and frame is sealed, which provides security against prying
- In addition, the continuous full-height hinge cap protects against pinching fingers in doors in public areas, particularly those where children are present
- Sight proof design of the continuous hinge provides privacy for lavatories, executive offices, or file rooms

#### PemkoHinge® Superior Design:

- PemkoHinge® has increased critical stress points of the hinge leaf extrusions providing additional strengths and rigidity to the completed product
- PemkoHinge® bearing design eliminates premature wear, guarantees proper alignment, and requires fewer bearings to carry more weight. The bearing is produced for Pemko using a chemical composition and injection process that provides a stronger, more accurately formed bearing
- PemkoHinge® is designed with inter-meshing gear segments in the hinge which provide 50% more bearing surface resulting in less wear
- PemkoHinge® goes through the anodizing process after completing all machining. This means the machined aluminum surfaces that are in direct contact with the bearing have a smoother, harder surface, thereby reducing wear
- PemkoHinge® maintains uniform bearing spacing for the full length of the hinge even when lengths exceed 10'
- PemkoHinge® uses #12-24 size fasteners with #10 head. (#12 Tek fasteners available upon request)
- PemkoHinge® commercial models are ideal for use on lead lined doors (i.e. hospital X-ray rooms), without requiring special screw locations

### How To Order (Hinge Part Designations)

Example: D | SPFM | 85 | SLI | HD1

Finishes		Hinge Types		Lengths	Hinge Options		Capacity	
BL	Black Anodized	AL_FM	Aluminum Full-Mortise	79	"blank"	Standard	"blank"	Standard Duty
C	Clear Anodized	AL_HS	Aluminum Half-Surface	83	CP	Center Pivot	HD1	Heavy Duty, Grade 1
D	Dark Bronze Anodized	FM	Full-Mortise	85	RG	Raised Gear	HD3	Heavy Duty, Grade 3
G	Gold Anodized	FS	Full-Surface	95	SF	Safety		
PW	Painted White	HS	Half-Surface	120	SL	Short Leaf (residential only)		
SN	Satin Nickel Anodized	RS138	Full-Mortise Residential: 1¾"		SLF	Short Leaf Flush		
		RS175	Full-Mortise Residential: 1¾"		SLI	Short Leaf Inset		
		SPFM	Special Full-Mortise					
		WT_FM	Wide Throw Full-Mortise					
		WT_HS	Half-Surface					

## BHMA Certification Program

This program was developed to establish product classifications through performance testing. Three grades (1, 2 and 3) of product classifications were established for continuous hinges, with three weight groups (150, 300 and 600) for each grade: Grade 3 being the lowest and Grade 1 being the highest classification. Each classification and weight group has a set of established cycle requirements and wear characteristics, with a minimum for vertical and lateral wear to establish a listing under a weight and grade classification, after the set number of cycles is completed.

Maximum Vertical Wear Allowable:

Grade 3 = 0.105"

Grade 2 = 0.030"

Grade 1 = 0.020"

Maximum Lateral Wear Allowable:

All Grades = 0.062"

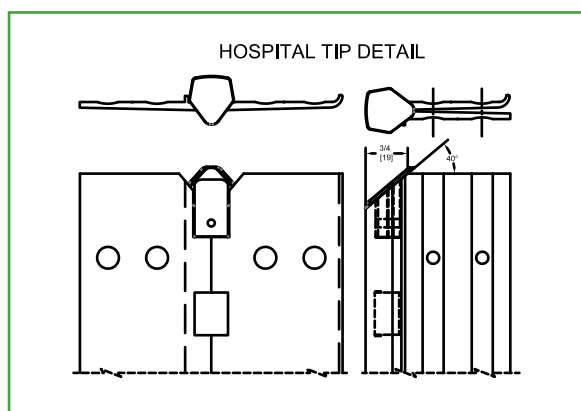
Cycle requirements range from Grade 3-600 requiring 100,000 cycles through Grade 1-150 requiring 2.5 million cycles.

For more information on certification testing or other product certification programs, please contact Pemko Customer Service.



## Hospital Tip

A special modification is available for certain hinges which provides a Hospital Tip Cap at the top of the gear cap, leaving no opening. A 45° angled cut on the gear cap and leaf covers provides a safe environment for hospitals and correctional facilities.



## Cycle Requirements - Per BHMA Standard ANSI/BHMA A156.26-2012

- Standard Duty Hinges (excluding \_RS175 & \_RS138) conform to Grade 3-150 and Grade 3-300
- HD3 Hinges conform to Grade 3-150, Grade 3-300, and Grade 3-600
- HD1 Hinges conform to Grade 2-150, Grade 1-300, and Grade 1-600
- 1100 Series and X-Series Hinges conform to Grade 1-150

## Weight Bearing - Per BHMA Standard ANSI/BHMA A156.26-2012

- This information pertains to all commercial models
- Heavier weight can be carried; please contact Customer Service for applications other than those listed in the chart
- Special hinge reinforcements are not required as hollow metal door and frame manufacturers' standard are acceptable. Removal of hinge reinforcements in the door and frame is not advised. Hinge preps must have fillers installed

## UL Fire Labeled 1½ & 3 Hour



LISTED  
DOOR HINGE  
76Y2

- All models designated with these symbols are tested and certified by Underwriters Laboratories Inc.® (U.S.A. and Canada) to standards UL10B, UL10C and UBC7.2 (positive pressure) for a 1½-Hour Fire Listing for all 4'0" x 10'0" and 8'0" x 10'0" door and frame assemblies. Fire listing certifications apply to all approved hollow metal and wood door assemblies in drywall or masonry wall construction
- Special FirePins™ are only required on 3-Hour assemblies. Please refer to page 95 for illustrations and information regarding the application of Pemko FirePins™

- All hinges are supplied with standard fastener kits. Replacement kits/individual fasteners may be purchased separately
- TEK/TORX fasteners may be purchased separately. Full-mortise hinges require 40 each; half-surface hinges require 20 each; full-surface hinges require 12 each
- All half-surface and full-surface hinges are supplied with a snap cover for the door leaf. Replacement snap covers may be purchased separately
- Rain caps may be purchased separately

# Electrically Modified Continuous Geared Hinges

## Electrical Modifications

- Pemko has vastly improved the cycle performance of the electrically modified hinge. Performance testing has shown that 3,000,000+ cycles can now be achieved using Pemko's exclusive polyurethane-coated 4, 8, or 12 TRI-FLEX titanium copper alloy cables. Each cable is capable of carrying 6 amps continuous or 16 amps in-rush @ 24-volts for 820 milliseconds. When ordering, please use the "shorthand code" shown in the chart page 82. For example, if you require a Clear Anodized standard Full-Mortise hinge at 83" with Quick Connect transfer - 4-wire, modified 36 $\frac{1}{4}$ " from the top, right hand, you would order a CFM83 with QC4 at 36 $\frac{1}{4}$ " from top - RH

## Options for Electrically Modified Continuous Geared Hinges

These options allow variable degrees of service to be performed at the specific locations of the current carrying cables by installing a serviceable/removable hinge which includes a removable module (SER), or installing a hinge with a pivoting accessible feature (ACC).

- Both options (SER & ACC) are available in 4 Wire (QC4), 8 Wire (QC8), 12 Wire (QC12) variants
- Available on FM, FS, HS, KFM, SLF, SLI, XF, XI, XK, XM, X25M Models

## Serviceable/Removable (SER) Module

The hinge is furnished to be installed in three sections allowing the current carrying cable to be serviced or replaced without removing the door from the frame. Additionally, the SER option allows the current carrying cables to be safely stored or delivered to the electrician or security contractor prior to the installation of the electrified hardware, eliminating the necessity of the electrician or security contractor being present when the doors are being hung.

Product Numbering Example: CFM83HD1xSER4

## Accessible (ACC) Feature

The hinge is furnished to be installed in a single section with the leaves modified to pivot at the location of the current carrying cable and allow access to the cables and connected wiring.

Product Numbering Example: CFM83HD1xACC4

## Concealed Magnetic Monitoring (CM)

Concealed magnetic monitoring is also available with the SER and ACC options. Magnetic monitor is supplied with monitor and an adjustable magnet.

Product Numbering Example: CFM83HD1xSER4xCM  
CFM83HD1xACC4xCM

## Customer Information Needed:

- Specify handing and prep location if other than Pemko standard

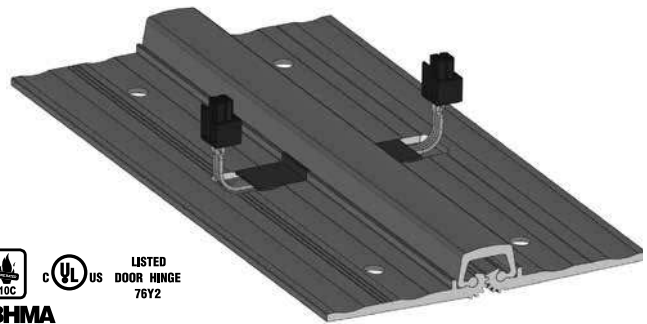
### Included:

- HD1, 1100 and X-Series model hinges using Molex connectors with ElectroLynx® are warranted for five (5) years. Standard duty and HD3 hinges are warranted for one (1) year
- Each electrical prep is supplied with one 48" and one 180" cable lead

### ElectroLynx®

As part of their promise to provide innovative, fast and effective high security solutions to their customers, certain ASSA ABLOY Group brands offer ElectroLynx®, a universal quick-connect system that simplifies the electrification of the door opening.

ElectroLynx® is a registered trademark of ASSA ABLOY Inc.



Quick Connect Transfer For Full Mortise (FM) Hinges	QC4 4 WIRE	Quick Connect Transfer For Full Surface (FS) & Half Surface (HS) Hinges	QC4_S 4 WIRE
	QC8 8 WIRE		QC8_S 8 WIRE
	QC12 12 WIRE		QC12_S 12 WIRE

Additional Electrical Modifications Options Code	
Additional Length of Quick Connect Cable Leads	
Adjustable Concealed Magnetic Monitoring	CM
Power Transfer - Prep Only	PT



## X-Series Hinges

- Thicker leaves than traditional continuous geared hinge and requires no additional clearance

- X-Series hinges allow for a deeper cavity for electrical wires when ordering an electrified hinge

### Full Mortise

XM\_

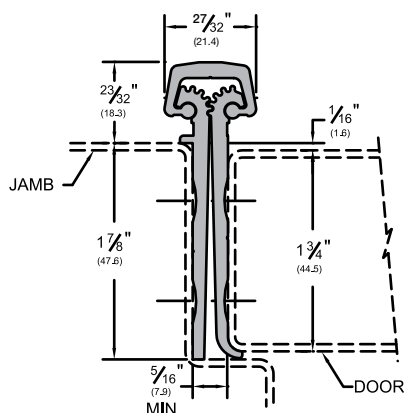
AVAILABLE FINISHES: C, D



BHMA  
CERTIFIED



LISTED  
DOOR HINGE  
76Y2



### Full Mortise for 2 1/2" Thick Door

- Wider hinge leaves to accommodate doors 2 1/2" thick

X25M\_

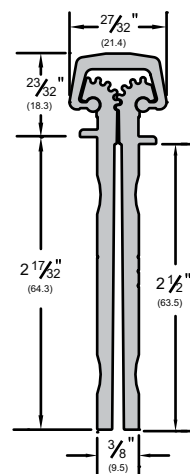
AVAILABLE FINISHES: C, D



BHMA  
CERTIFIED



LISTED  
DOOR HINGE  
76Y2



### Short Leaf Flush

XF\_

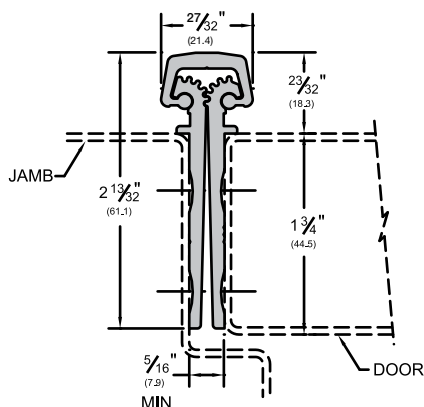
AVAILABLE FINISHES: C, D



BHMA  
CERTIFIED



LISTED  
DOOR HINGE  
76Y2



### Kawneer Full Mortise

XK\_

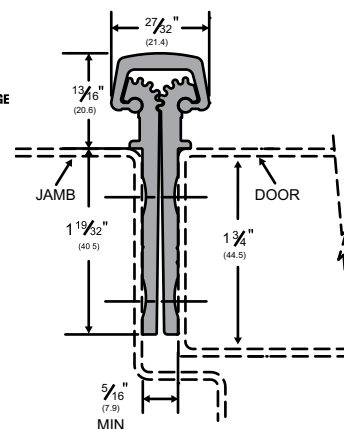
AVAILABLE FINISHES: C, D



BHMA  
CERTIFIED



LISTED  
DOOR HINGE  
76Y2



### Short Leaf Inset

- Designed for use with hollow metal doors where the inset conforms to S.D.I. specifications for aligning doors and frames

XI\_

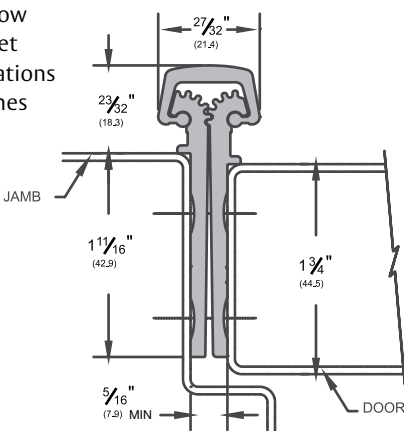
AVAILABLE FINISHES: C, D



BHMA  
CERTIFIED



LISTED  
DOOR HINGE  
76Y2



AVAILABLE FINISHES FOR PRODUCTS SHOWN ON THIS PAGE (see General Information section for finish chart)

C (Clear Anodized) D (Dark Bronze Anodized)

## Offset Hinges

- Used when the door needs to swing out of the opening

### Offset Full Mortise

\_OS\_FM

AVAILABLE FINISHES: C, D

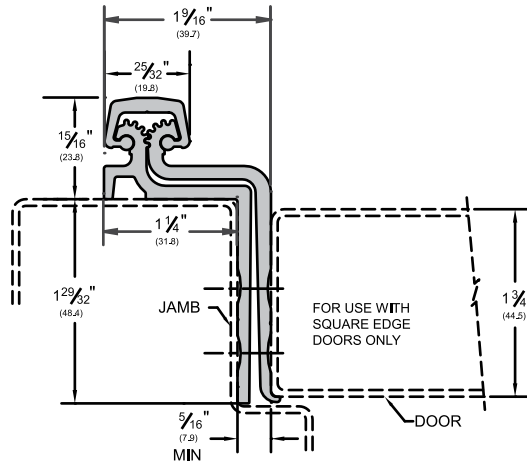


**BHMA**  
CERTIFIED



US

LISTED  
DOOR HINGE  
76Y2



### Offset Half Surface

- Replacement snap cover is C1 for Clear Anodized or D1 for Dark Bronze Anodized

\_OS\_HS

AVAILABLE FINISHES: C, D

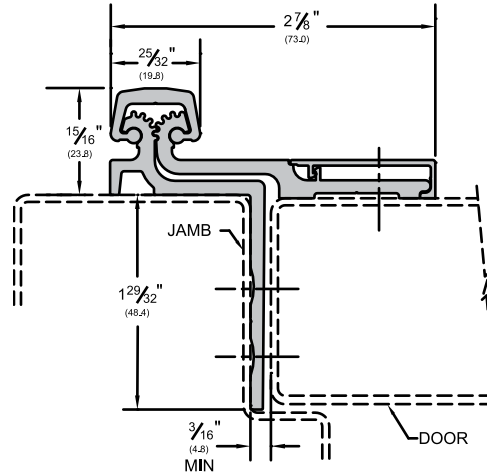


**BHMA**  
CERTIFIED



US

LISTED  
DOOR HINGE  
76Y2



AVAILABLE FINISHES FOR PRODUCTS SHOWN ON THIS PAGE (see General Information section for finish chart)  
C (Clear Anodized) D (Dark Bronze Anodized)

## Full Mortise Hinges

- Full-Mortise units are designed mainly for new door applications and are applied to the frame rabbet and door edge to conceal both leaves

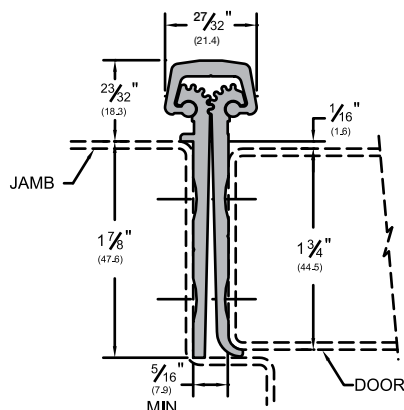
### Full Mortise

\_FM

AVAILABLE FINISHES: **BL, C, D, G, PW, SN**



LISTED  
DOOR HINGE  
76Y2



### Full Mortise Short Leaf Inset

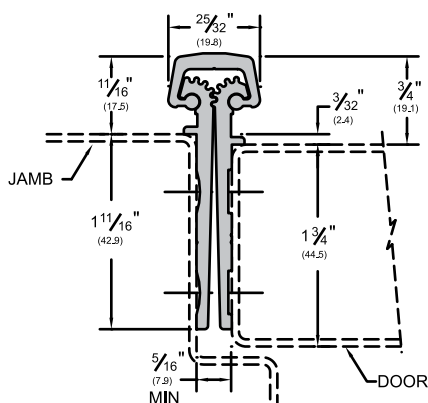
- Designed for use with doors which range between 1 3/4" to 2 1/4"
- Designed for use with hollow metal doors and frames where the inset conforms to S.D.I. specifications for aligning doors and frames

\_FM\_SLI

AVAILABLE FINISHES: **BL, C, D, G, PW, SN**



LISTED  
DOOR HINGE  
76Y2



### Full Mortise Short Leaf Flush

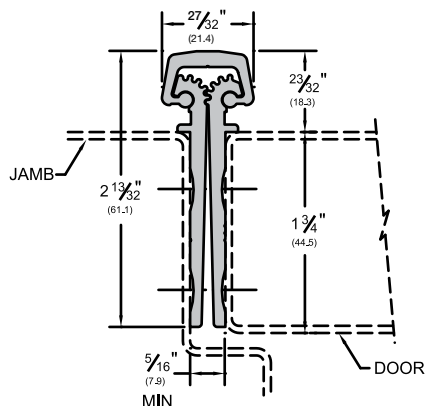
- Designed for use with doors which range between 1 3/4" to 2 1/4"
- Also used for bifold applications to keep the faces of the doors flush (not illustrated)

\_FM\_SLF

AVAILABLE FINISHES: **BL, C, D, G, PW, SN**



LISTED  
DOOR HINGE  
76Y2



AVAILABLE FINISHES FOR PRODUCTS SHOWN ON THIS PAGE (see General Information section for finish chart)

**BL** (Black Anodized) **C** (Clear Anodized) **D** (Dark Bronze Anodized) **G** (Gold Anodized)

**PW** (Painted White) and **SN** (Satin Nickel) are special finishes available upon request.

## Special Full Mortise Hinges

- Special Full-Mortise units are designed for door and frame applications where the hinge leaf may interfere with the weatherstrip, thermal break, or applied stop of the frame

- Special Full-Mortise hinges are applied to the frame rabbet and door edge to conceal both leaves

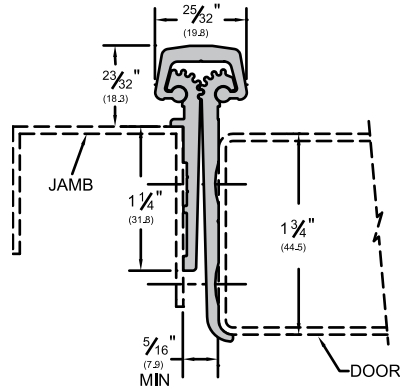
### Special Full Mortise

\_SPFM

AVAILABLE FINISHES: BL, C, D, PW, SN



LISTED  
DOOR HINGE  
76Y2



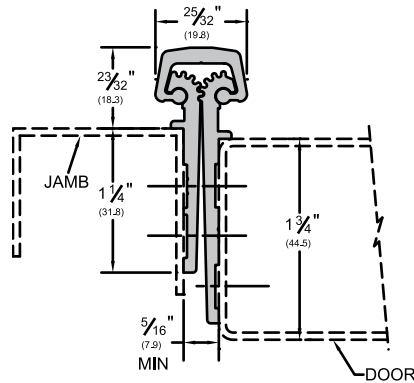
### Special Full Mortise Short Leaf Inset

\_SPFM\_SLI

AVAILABLE FINISHES: BL, C, D, G, PW, SN



LISTED  
DOOR HINGE  
76Y2



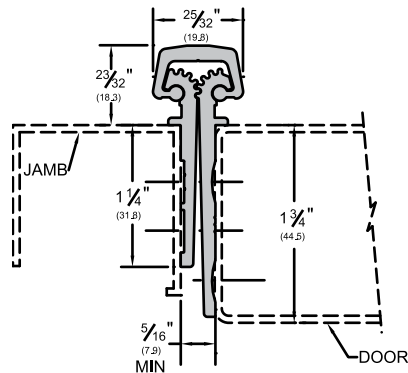
### Special Full Mortise Short Leaf Flush

\_SPFM\_SLF

AVAILABLE FINISHES: BL, C, D, G, PW, SN



LISTED  
DOOR HINGE  
76Y2



AVAILABLE FINISHES FOR PRODUCTS SHOWN ON THIS PAGE (see General Information section for finish chart)  
BL (Black Anodized) C (Clear Anodized) D (Dark Bronze Anodized) G (Gold Anodized)  
PW (Painted White) and SN (Satin Nickel) are special finishes available upon request.

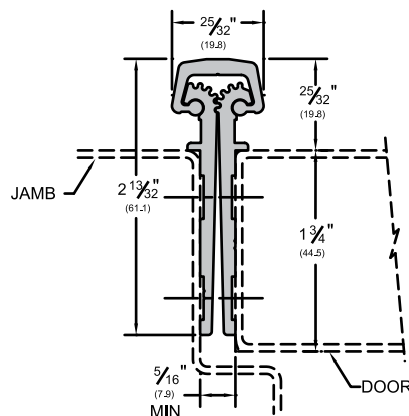
## Full Mortise Hinge

- Like our other Full Mortise units, the Kawneer Hinges are designed mainly for new door applications and are applied to the frame rabbet and door edge to conceal both leaves
- Developed for the Kawneer "Tuffline" series of aluminum doors

### Kawneer Full Mortise

K\_FM

AVAILABLE FINISHES: **BL**, **C**, **D**, **PW**, **SN**



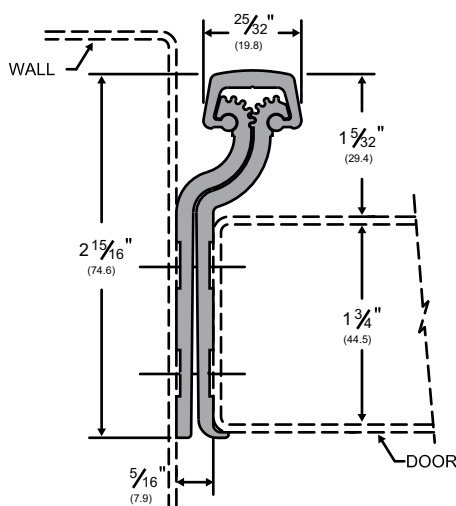
### Raised Gear Hinge

- Designed for wood or metal cased openings when hinge is to be installed deep on the rabbet. The design of the leaves allows for the hinge to pivot without interference from the cap.
- Certain door/frame conditions may require an extra 1/32" to 1/16" clearance. Excessive clearance on fire rated assemblies may violate the requirements of NFPA80

### Full Mortise Raised Gear

\_FM\_RG

AVAILABLE FINISHES: **BL**, **C**, **D**, **PW**, **SN**



AVAILABLE FINISHES FOR PRODUCTS SHOWN ON THIS PAGE (see General Information section for finish chart)  
**BL** (Black Anodized) **C** (Clear Anodized) **D** (Dark Bronze Anodized) **G** (Gold Anodized)  
**PW** (Painted White) and **SN** (Satin Nickel) are special finishes available upon request.

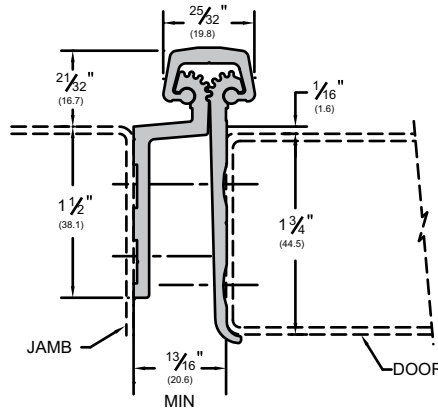
## Full Mortise Safety Hinge

- Full Mortise Safety units are designed mainly for new door applications in child care and nursing facilities
- These hinges require extra clearance and are applied to conceal both leaves

### Full Mortise Safety

\_FM\_SF

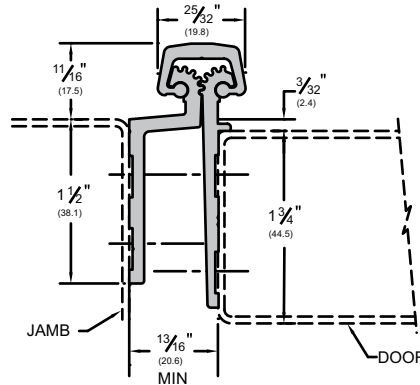
AVAILABLE FINISHES: **BL, C, D, PW, SN**



### Full Mortise Short Leaf Inset Safety

\_FM\_SLISF

AVAILABLE FINISHES: **BL, C, D, PW, SN**



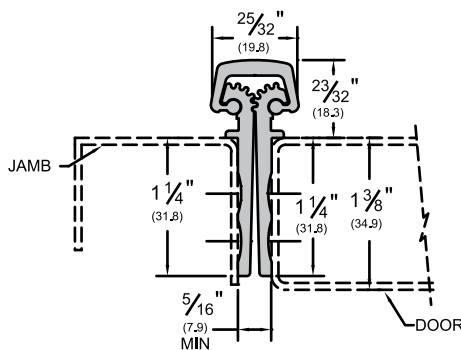
### Full Mortise Hinge for 1 3/8" Door

- More bearings than \_RS138 hinge to work in commercial grade application
- Shorter leaves for thinner doors

## Full Mortise

FM\_SLF138

AVAILABLE FINISHES: **BL, C, D, PW, SN**



AVAILABLE FINISHES FOR PRODUCTS SHOWN ON THIS PAGE (see General Information section for finish chart)  
**BL** (Black Anodized) **C** (Clear Anodized) **D** (Dark Bronze Anodized)  
**PW** (Painted White) and **SN** (Satin Nickel) are special finishes available upon request.



## Wide Throw Full Mortise Hinge

- Wide Throw Full Mortise units are designed mainly for new door applications that require extra clearance due to special frame, door or wall design, and are applied to the frame rabbet and door edge to conceal both leaves
- More clearance between the door and frame when door is open 180°
- Available only in heavy duty to support larger doors

### Wide Throw Full Mortise

WT\_FM

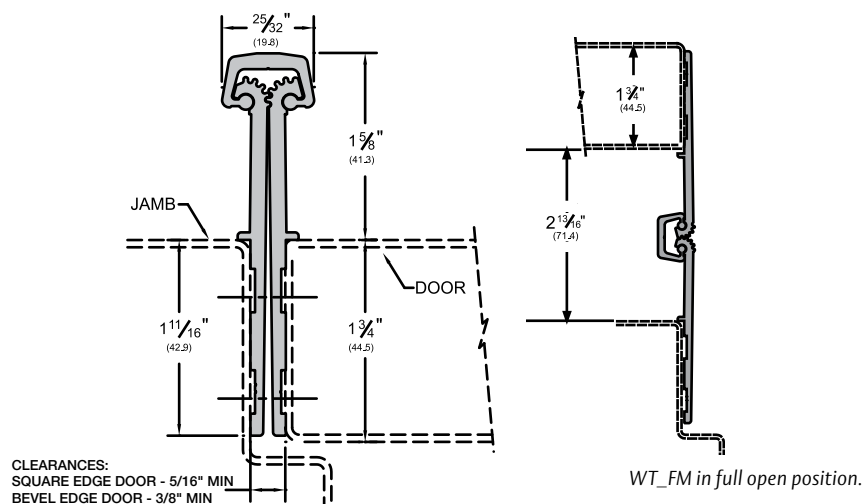
AVAILABLE FINISHES: C, D, G



BHMA  
CERTIFIED



LISTED  
DOOR HINGE  
76Y2



WT\_FM in full open position.

## Wide Throw Half Surface Hinge

- Wide Throw Half Surface units are designed mainly for retrofit applications that require extra clearance due to special frame, door, or wall design and are applied to the frame rabbet and the exposed door surface
- Wide Throw Half Surface units combine the versatility of the Half Surface unit and the clearance of a Wide Throw hinge into one
- Replacement snap cover is C1 for Clear Anodized or D1 for Dark Bronze Anodized

### Wide Throw Half Surface

WT\_HS

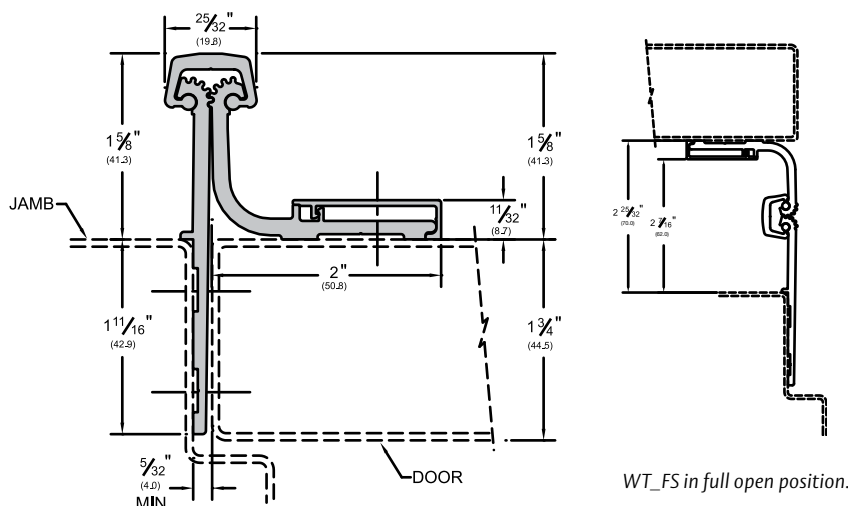
AVAILABLE FINISHES: C, D, G



BHMA  
CERTIFIED



LISTED  
DOOR HINGE  
76Y2



WT\_HS in full open position.

AVAILABLE FINISHES FOR PRODUCTS SHOWN ON THIS PAGE (see General Information section for finish chart)  
C(Clear Anodized) D(Dark Bronze Anodized) G(Gold Anodized)

## Half Surface Hinge

- Half Surface units are designed mainly for retrofit work, and are applied to the exposed surface of the door and the frame rabbet
- Designed for use with hollow metal frames, where the inset conforms to S.D.I. specifications for aligning doors and frames

- Allows for adjustments in order to properly align edge of the door to the frame
- Replacement snap cover is C1 for Clear Anodized or D1 for Dark Bronze Anodized

### Half Surface

\_HS

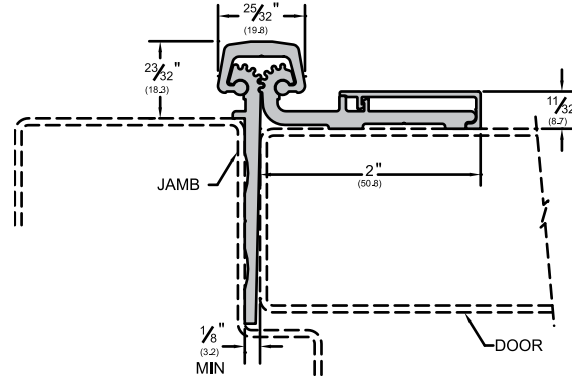
AVAILABLE FINISHES: BL, C, D, PW, SN



BHMA  
CERTIFIED



LISTED  
DOOR HINGE  
76Y2



## Half Surface Safety Hinge

- Half Surface Safety units are designed mainly for retrofit work in child care and nursing facilities and are applied to the exposed surface of the door and the frame rabbet

- Replacement snap cover is C1 for Clear Anodized or D1 for Dark Bronze Anodized

### Half Surface Safety

\_HS\_SF

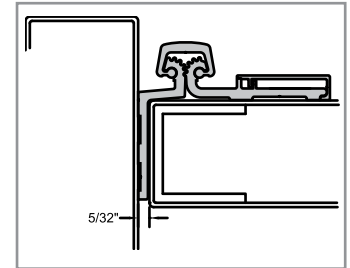
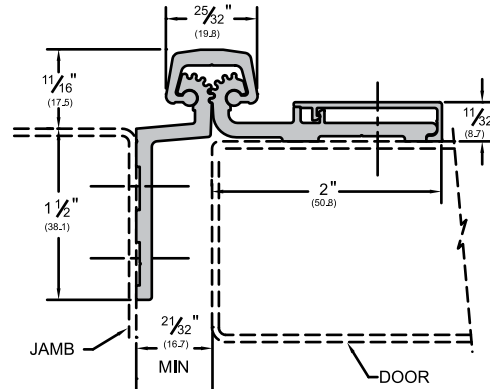
AVAILABLE FINISHES: BL, C, D, PW, SN



BHMA  
CERTIFIED



LISTED  
DOOR HINGE  
76Y2



HS\_SF in deep frame application is no longer a safety hinge

## Half Mortise Hinge

- Half Mortise units are designed mainly for retrofit work and are applied to the exposed surface of the frame and the door edge
- Designed to require only 5/32" clearance instead of 5/16" and also allows for adjustments to properly align edge of the door to the frame face

- Replacement snap cover is C29316 for Clear Anodized or D29316 for Dark Bronze Anodized

### Half Mortise

\_HM

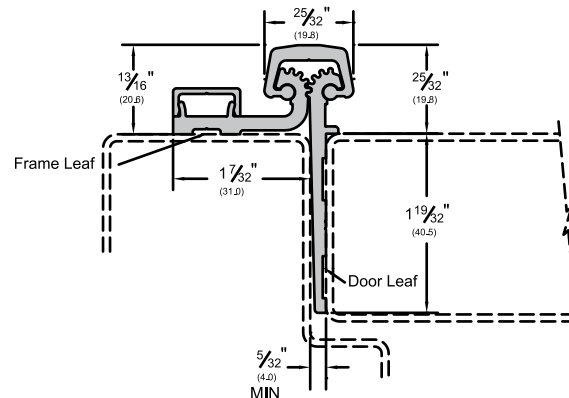
AVAILABLE FINISHES: C, D, G



BHMA  
CERTIFIED



LISTED  
DOOR HINGE  
76Y2



AVAILABLE FINISHES FOR PRODUCTS SHOWN ON THIS PAGE (see General Information section for finish chart)  
BL (Black Anodized) C (Clear Anodized) D (Dark Bronze Anodized) G (Gold Anodized)  
PW (Painted White) and SN (Satin Nickel) are special finishes available upon request.

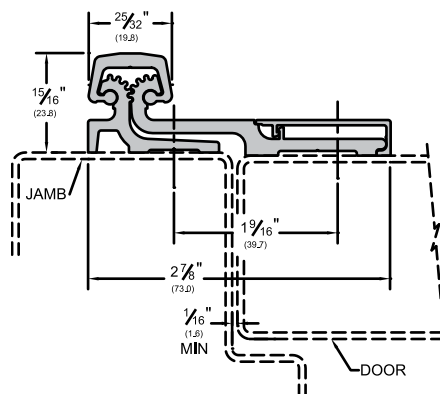
## Standard Full Surface Hinge

- Full Surface units are designed mainly for retrofit work, and are applied to the exposed surfaces of the door and frame
- Replacement snap cover is C1 for Clear Anodized or D1 for Dark Bronze Anodized

### Full Surface

\_FS

AVAILABLE FINISHES: BL, C, D, PW, SN



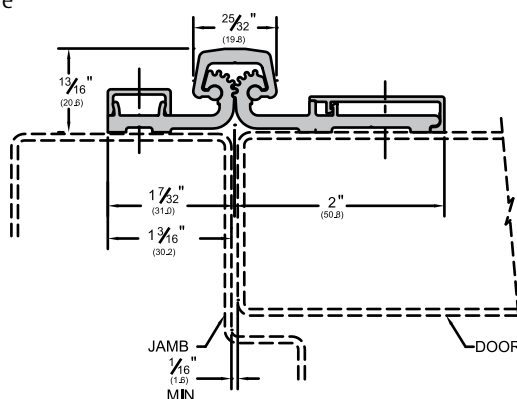
## Full Surface Center Pivot Hinge

- Full Surface Center Pivot units are designed mainly for retrofit work and are applied to the exposed surfaces of the door and frame
- Full Surface Center Pivot units easily replace butt hinges since no door or frame adjustments are necessary and are more versatile with restricted frame faces
- Replacement snap cover for door leaf is C1 for Clear Anodized or D1 for Dark Bronze Anodized. Replacement snap cover for frame leaf is C29316 for Clear Anodized or D29316 for Dark Bronze Anodized

### Full Surface Center Pivot

\_FS\_CP

AVAILABLE FINISHES: BL, C, D, PW, SN



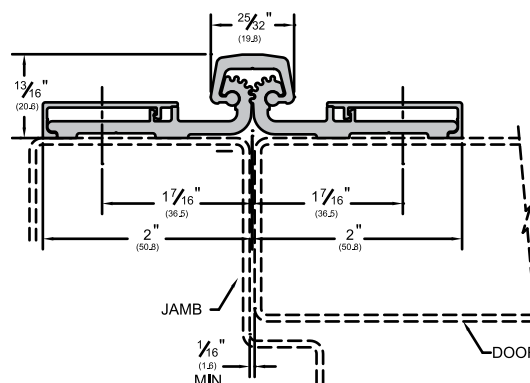
## Full Surface Balanced Pivot Hinge

- Allows for easy replacement from butt hinges as the pivot point remains the same and no door or frame adjustments are necessary
- No template adjustments are needed for existing door opening/closing devices
- Equal length leaves provide an aesthetic appearance
- Good in a bi-fold application where two doors need to be hinged
- Replacement snap cover for either leaf is C1 for Clear Anodized or D1 for Dark Bronze Anodized

### Full Surface Balanced Pivot

\_FS\_BP

AVAILABLE FINISHES: BL, C, D, PW, SN



AVAILABLE FINISHES FOR PRODUCTS SHOWN ON THIS PAGE (see General Information section for finish chart)  
BL (Black Anodized) C (Clear Anodized) D (Dark Bronze Anodized)  
PW (Painted White) and SN (Satin Nickel) are special finishes available upon request.

## Full Mortise Residential Hinges

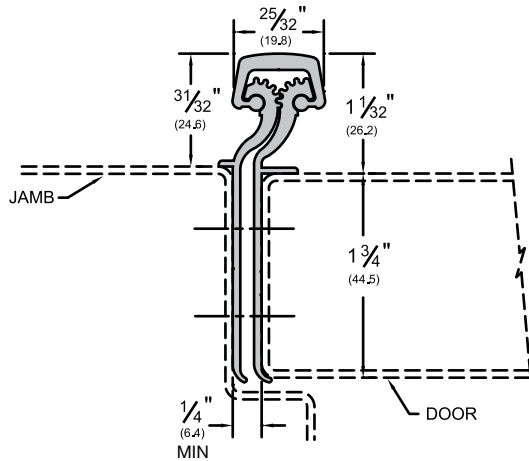
- Full Mortise Residential units are designed mainly for new door and frame applications, and are applied to conceal both leaves

NOTE: All RS series hinges are excluded from the "LIFE OF THE OPENING" guarantee, and instead carry a ten (10) year warranty

### \_RS175

AVAILABLE FINISHES: C, D

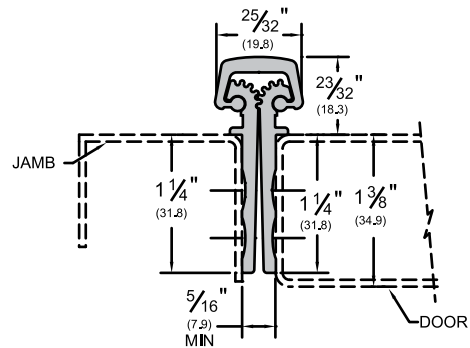
- Designed for  $1\frac{3}{4}$ " MAXIMUM thickness with a weight up to 90 lbs.



### \_RS138

AVAILABLE FINISHES: C, D

- Shorter leaves for thinner doors
- Designed for doors  $1\frac{3}{8}$ " thick with a weight limit up to 90 lbs.

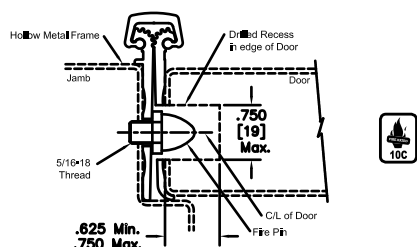


AVAILABLE FINISHES FOR PRODUCTS SHOWN ON THIS PAGE (see General Information section for finish chart)  
C (Clear Anodized) D (Dark Bronze Anodized)

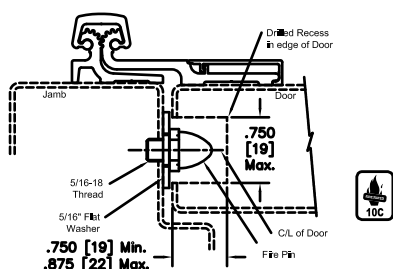
## FirePins For Use With 3-Hour Fire Rated Assemblies

- FirePins™ are required to achieve 3-hour fire rating
- Although PemkoHinge® Continuous Hinges carry UL Fire Ratings unequaled in the industry, some applications may require the use of FirePins™
- FirePin™ applications fall within the UL guidelines for retro-fitting assemblies in the field. Expensive shop modifications and door/frame reinforcements are not required
- FirePins™ also add extra security to a door assembly

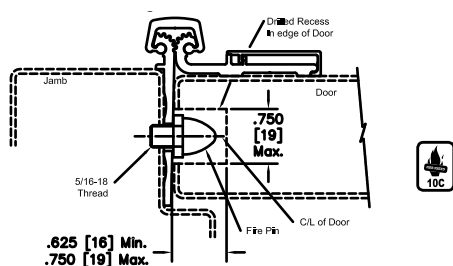
### Full Mortise Hinges



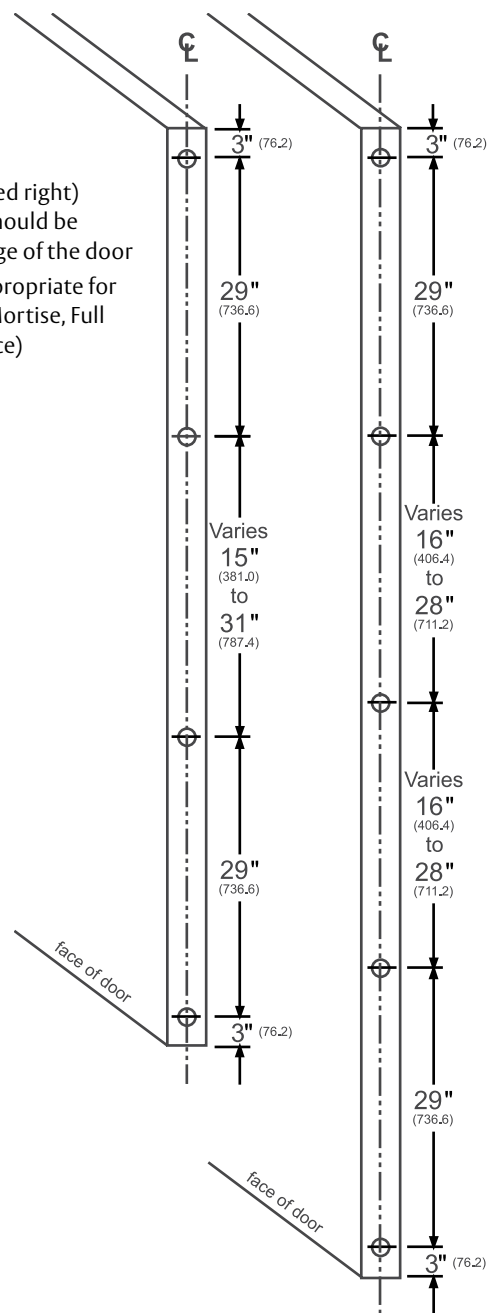
### Full Surface Hinges



### Half Surface Hinges



### 80" to 95" Hinges 96" to 120" Hinges



#### FirePin Locations

- The locations (illustrated right) indicate where holes should be drilled on the hinge edge of the door
- These locations are appropriate for all hinge models (Full Mortise, Full Surface, and Half Surface)

## Double Swing Hinge and Emergency Release Stop

- Innovative healthcare solution that permits quick door opening in an emergency situation
- Double Swing Hinge has a unique 100° swing and allows the door to swing in either direction
- Emergency Release Stop features a special flush bolt that is used to release the door in an emergency situation. Hospital tip is standard.
- The Double Swing Hinge and Emergency Release Stop are accepted by the New York State Office of Mental Health (OMH) for use in high risk areas.
- The Markar DSH1000 Pin & Barrel Double Swing Hinge is another option to use with the Emergency Release Stop to create an anti-barricade system. See the Markar products section of this catalog for more information.

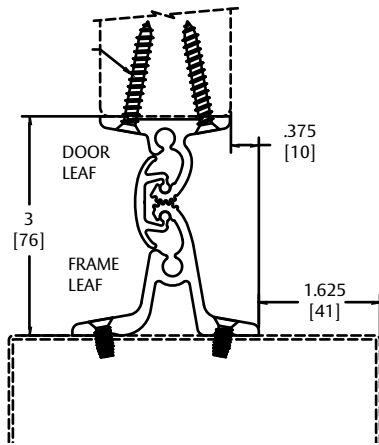
### Double Swing Hinge

- Meets the cycle test requirements for ANSI/BHMA A156.26 for Continuous Hinges.
- Meets the barrier free requirements of ICC/ANSI A117.1 and ADAAG (2010)

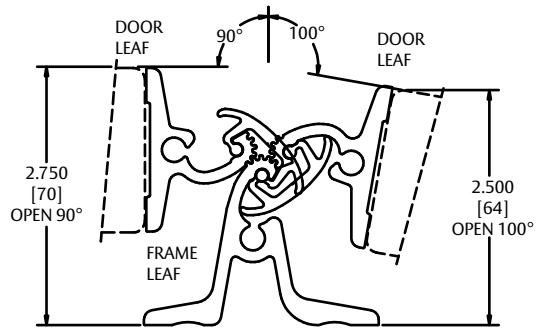
#### DSH\_

AVAILABLE FINISHES: C, other finishes available upon request

- Designed for 1 $\frac{3}{4}$ " MAXIMUM thickness with a weight up to 250 lbs.



Hinge Size	Opening	Clear Anodized
84"	7' 0"	DSHP01C-84
96"	8' 0"	DSHP01C-96
120"	10' 0"	DSHP01C-120

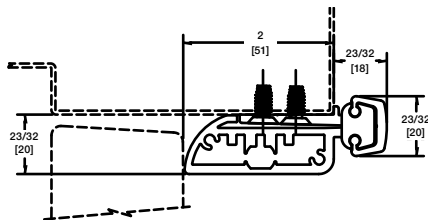


### Emergency Release Stop

- Minimum 2 $\frac{3}{4}$ " backset for hardware trim
- NOTE: With 2 $\frac{3}{4}$ " hardware trim backset, a Notch is required in the ERS to clear the hardware trim. The type of Notch is determined by the manufacturer based on the information provide on the order form.

#### ERS\_

AVAILABLE FINISHES: C, other finishes available upon request



- To avoid using an extended lip strike, use a single rabbet jamb on strike side of frame only with cased open header and hinge jamb.

Hinge Size	Opening	Clear Anodized – Left Hand	Clear Anodized – Right Hand
84"	7' 0"	ERS84CxHT-LH	ERS84CxHT-RH
96"	8' 0"	ERS96CxHT-LH	ERS96CxHT-RH
120"	10' 0"	ERS120CxHT-LH	ERS120CxHT-RH

AVAILABLE FINISHES FOR PRODUCTS SHOWN ON THIS PAGE (see General Information section for finish chart)  
C (Clear Anodized) D (Dark Bronze Anodized)



## Power Transfers

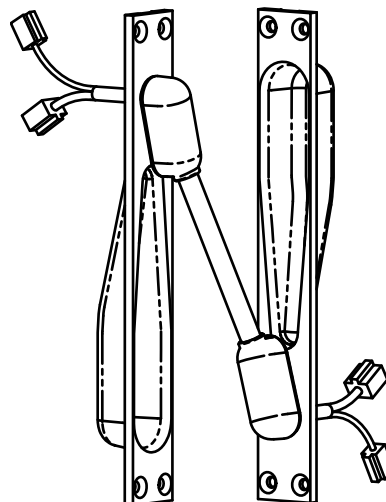
- These Securiton electronic power transfer units fit into doors and frames to transfer power from your power supply to the door-mounted electronic device

- Contact your hinge manufacturer for cutout availability

### EL-CEPT

AVAILABLE COLORS:  
US32D, US10B

- Mortises into the edges of the door and frame
- Tamper-resistant; no exposed openings
- All metal construction, including backboxes
- $\frac{7}{8}$ " knockouts on back boxes to accommodate EMF-type fitting
- 12-wire configuration with ElectroLynx compatible connectors
- Tested to 1,000,000 cycles
- Will not work on center-hung or balanced doors
- Works with most continuous hinges, up to 6" wide
- UL10B and UL10C listed



### EL-EPT

AVAILABLE COLORS:  
US2C

- Installs in the door and frame edges
- Flexible steel shield protects wires— $\frac{3}{8}$ " (9.5mm) I.D.
- New universal device; works with most butt and continuous hinges
- Not for use with center pivot doors or with pivot hinges with offset greater than  $\frac{3}{4}$ "
- UL634, UL10B, UL10C Listed
- ANSI A250.13-2003–Windstorm Resistant



### EL-EPTL

AVAILABLE COLORS:  
US2C

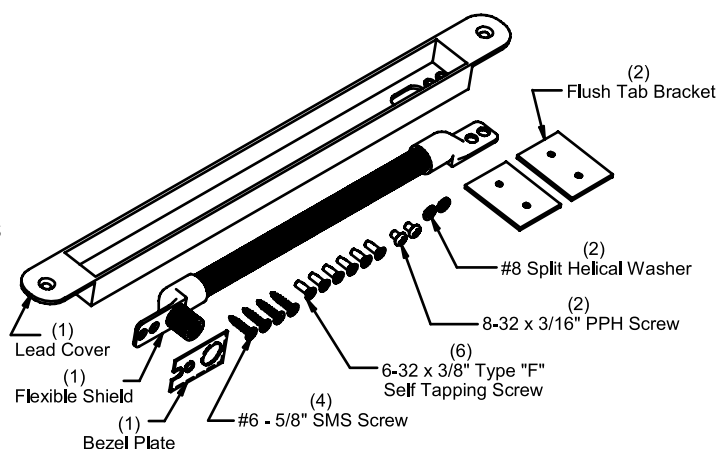
- Installs in the door and frame edges
- Flexible steel shield protects wires— $\frac{3}{8}$ " (9.5mm) I.D.
- New universal device; works with most butt and continuous hinges
- Not for use with center pivot doors or with pivot hinges with offset greater than  $\frac{3}{4}$ "
- UL634, UL10B, UL10C Listed
- ANSI A250.13-2003–Windstorm Resistant



### EL-EPT-SC

AVAILABLE COLORS:  
US2C

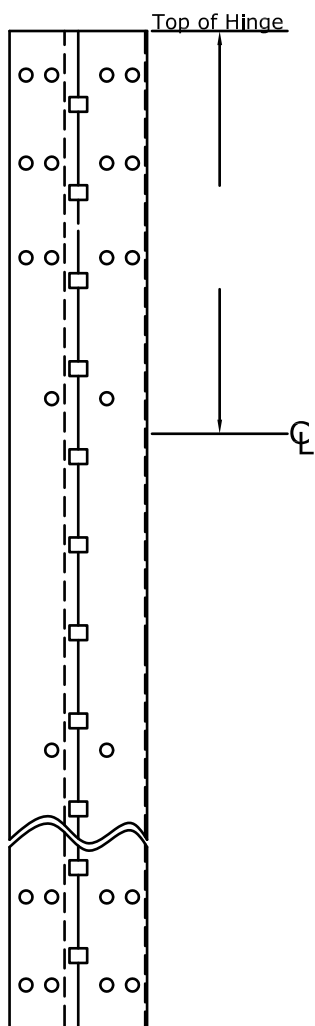
- Installs in the door and frame edges
- Flexible steel shield protects wires— $\frac{3}{8}$ " (9.5mm) I.D.
- New universal device; works with most butt and continuous hinges
- Functions on off-set pivot and swing clear hinged doors
- UL634, UL10B, UL10C Listed
- ANSI A250.13-2003–Windstorm Resistant



## Pemko PT Information Form

In order to assign an accurate ship date and begin production of your order, please provide us with the information requested. We appreciate your cooperation and time to assist us in providing you with the type of product that will meet your requirements.

ALL PT LOCATIONS ARE REQUIRED FROM TOP OF DOOR TO CENTERLINE OF PREP



Company Name: \_\_\_\_\_  
 Contact Name: \_\_\_\_\_  
 P.O.#: \_\_\_\_\_  
 Job Name: \_\_\_\_\_  
 Phone Number: \_\_\_\_\_  
 Fax Number: \_\_\_\_\_

### CTP (Power Transfer Model)

- ☐ Pemko/Markar EL-CEPT
- ☐ Pemko/Markar EL-EPT \*\*\*
- ☐ Pemko/Markar EL-EPTL \*\*\*
- ☐ Pemko/Markar EL-EPT-SC
- ☐ Securitron CEPT
- ☐ Securitron EPT/Adams Rite 4612-1 \*\*\*
- ☐ Securitron EPTL/Adams Rite 4612-2 \*\*\*
- ☐ Securitron EPT-SC/Adams Rite 4612-SC
- ☐ Von Duprin EPT-2 & EPT-10
- ☐ Precision \*\*\*
- ☐ Other (Template Needed) \_\_\_\_\_

### \*\*\* Specify Hinge Leaf to Receive Mortise Prep (needed)

- ☐ Frame Leaf
- ☐ Door Leaf

Hinge Length: \_\_\_\_\_

RHR/LH: \_\_\_\_\_

LHR/RH: \_\_\_\_\_

Notes: \_\_\_\_\_  
 \_\_\_\_\_  
 \_\_\_\_\_  
 \_\_\_\_\_

Order acknowledgement will be sent after all information requirements are met to determine a ship date

# ERS\_x DSH\_ - Customer Form

PLEASE FILL IN ALL BOXES BELOW WITH THE RELEVANT INFORMATION. ALL BOXES MUST BE FILLED IN TO ENSURE YOU RECEIVE THE CORRECT DSH HINGE

0.090"

8" SER

CASE FRAME STRIKE SIDE (OR SINGLE RABBIT OPTIONAL)

T.O.F. TO CL OF LOCK SET

FRAME HEIGHT

DOOR UNDERCUT

BACKSET

LOCKSET & TRIM PART NUMBERS (DESCRIPTION)

DSH 1 3/4" PIVOT POINT

36" FRAME OPENING

1 5/8"

3/8"

1 1/4"

2 1/2"

1/8" ERS PIVOT POINT

5/16"

2"

CASE FRAME STRIKE SIDE (OR SINGLE RABBIT OPTIONAL)

1/8" MIN.

PLEASE PROVIDE YOUR PO#

DOOR HANDING: RH/LH

WILL THERE BE A THRESHOLD? Y/N  
IF YES, DESCRIBE BELOW:

CHECK ONE

☐ SER (SER4, SER8 OR SER12) (LOCATED TOP OF HINGE)

FRAME LEAF

DOOR LEAF

☐ FRAME & DOOR LEAF FLUSH (BOTTOM OF HINGE)

☐ FRAME & DOOR LEAF OFFSET (BOTTOM OF HINGE)

REV. 5, 04/28/14

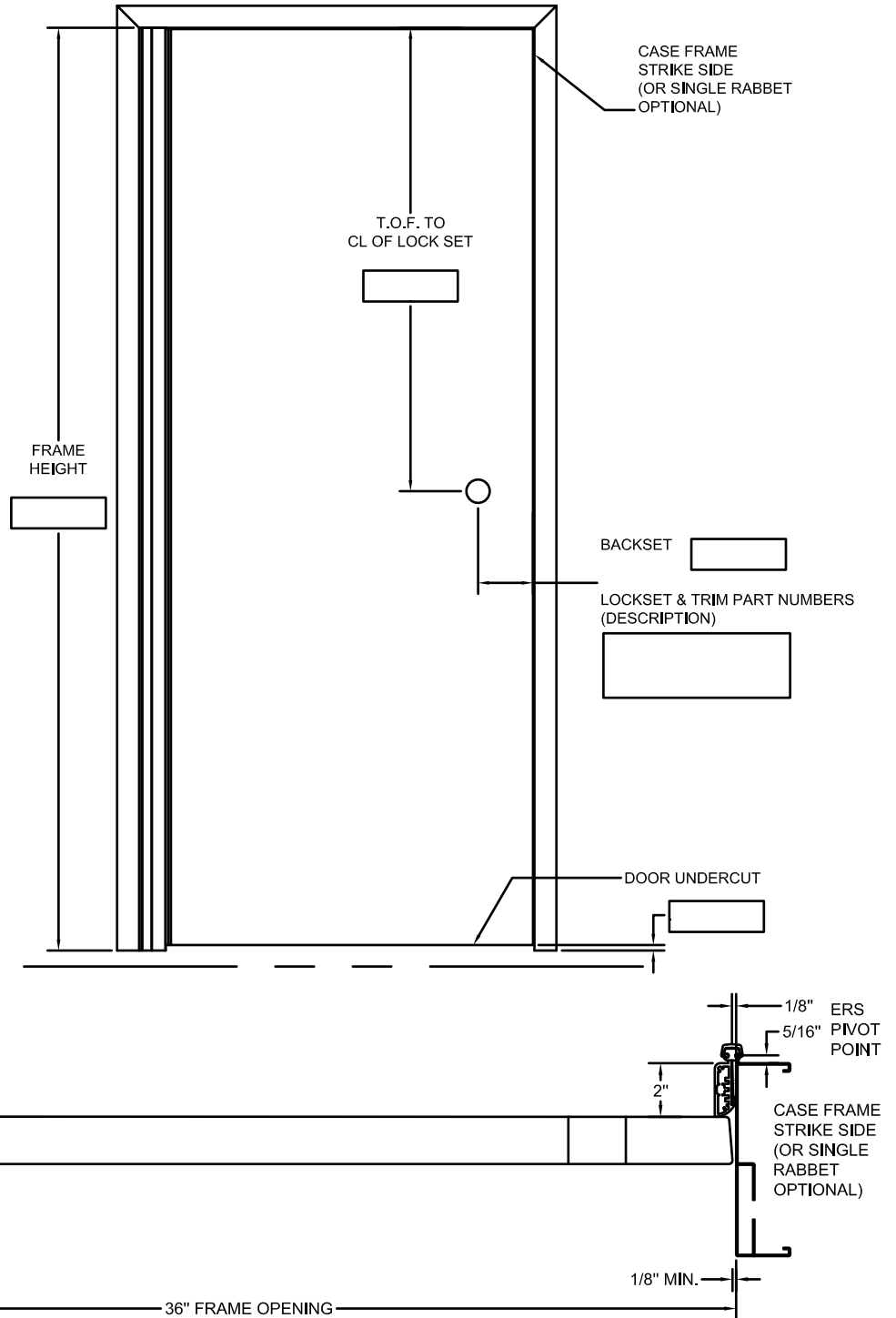
Manufacturer reserves the right to make changes without formal notice. Contact Engineering for latest revision.

# ERS – Customer Form

PLEASE FILL IN ALL BOXES BELOW WITH THE RELEVANT INFORMATION. ALL BOXES MUST BE FILLED IN TO ENSURE YOU RECEIVE THE CORRECT ERS HINGE

PLEASE PROVIDE YOUR PO#

DOOR HANDING: RH/LH -

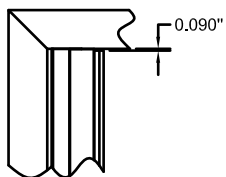


REV. 4, 01/10/14

Manufacturer reserves the right to make changes without formal notice. Contact Engineering for latest revision.

# DSH\_ - Customer Form

PLEASE FILL IN ALL BOXES BELOW WITH THE RELEVANT INFORMATION. ALL BOXES MUST BE FILLED IN TO ENSURE YOU RECEIVE THE CORRECT DSH HINGE



PLEASE PROVIDE YOUR PO#

DOOR HANDING: RH/LH

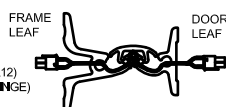
WILL THERE BE A THRESHOLD? Y/N  
IF YES, DESCRIBE BELOW:



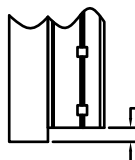
CHECK ONE

☐

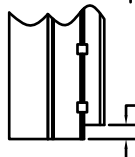
SER  
(SER4, SER8 OR SER12)  
(LOCATED TOP OF HINGE)


☐

FRAME & DOOR  
LEAF FLUSH  
(BOTTOM OF HINGE)

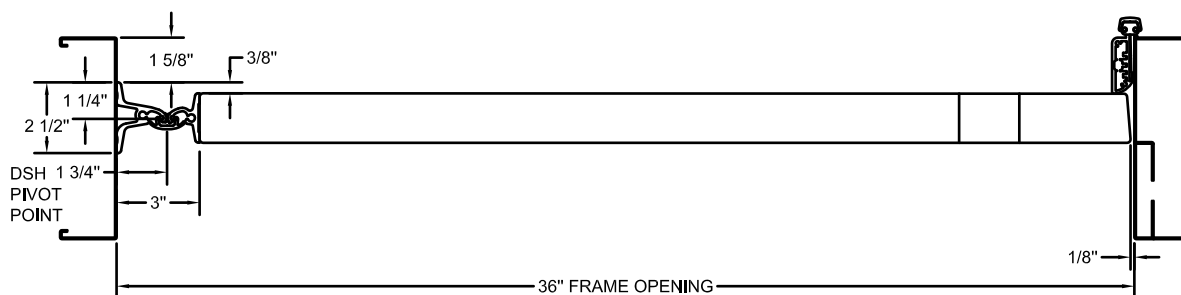

☐

FRAME & DOOR  
LEAF OFFSET  
(BOTTOM OF HINGE)



FRAME  
HEIGHT

DOOR UNDERCUT



REV. 5, 04/28/14

Manufacturer reserves the right to make changes without formal notice. Contact Engineering for latest revision.